

ZOTAC[®]

INTEL SERIES MOTHERBOARD



Designed for 3rd Generation
Intel® Core™ Processors

Z77-ITX WiFi

Z77 ITX SERIES MOTHERBOARD

USER'S MANUAL



Electronic Emission Notices

Federal Communications Commission (FCC) Statement

This equipment has been tested and found to comply with the limits for a Class B digital device, pursuant to Part 15 of FCC Rules. These limits are designed to provide reasonable protection against harmful interference in a residential installation. This equipment generates, uses and can radiate radio frequency energy and, if not installed and used in accordance with instructions contained in this manual, may cause harmful interference to radio and television communications. However, there is no guarantee that interference will not occur in a particular installation.

If this equipment does cause harmful interference to radio or television reception, which can be determined by turning the equipment off and on, the user is encouraged to try to correct the interference by one or more of the following measures:

- REORIENT OR RELOCATE THE RECEIVING ANTENNA
- INCREASE THE SEPARATION BETWEEN THE EQUIPMENT AND THE RECEIVER
- CONNECT THE EQUIPMENT INTO AN OUTLET ON A CIRCUIT DIFFERENT FROM THAT OF THE RECEIVER
- CONSULT THE DEALER OR AN EXPERIENCED AUDIO/TELEVISION TECHNICIAN

NOTE:

Connecting this device to peripheral devices that do not comply with Class B requirements, or using an unshielded peripheral data cable, could also result in harmful interference to radio or television reception.

The user is cautioned that any changes or modifications not expressly approved by the party responsible for compliance could void the user's authority to operate this equipment.

To ensure that the use of this product does not contribute to interference, it is necessary to use shielded I/O cables.

Copyright

This manual is copyrighted with all rights reserved. No portion of this manual may be copied or reproduced by any means.

While every precaution has been taken in the preparation of this manual, no responsibility for errors or omissions is assumed. Neither is any liability assumed for damages resulting from the use of the information contained herein.

Trademarks

All brand names, logos and registered trademarks mentioned are property of their respective owners.

CAUTION:

Risk of explosion if the battery is replaced with an incorrect type. Batteries should be recycled where possible. Disposal of used batteries must be in accordance with local environmental regulations.

Table of Contents

Motherboard Specifications	4
Motherboard Layout	6
Hardware Installation	9
Safety Instructions	9
Preparing the Motherboard	10
Installing the CPU	10
Installing the CPU Fan	11
Installing Memory Modules	11
Installing the Motherboard	12
Installing the I/O Shield	12
Securing the Motherboard into the Chassis	12
Connecting Cables and Setting Switches	13
24-pin ATX Power Connector-PW1	14
8-pin ATX_12V power connector-PW2	14
SPDIF-Out Header-SPDIF	15
COM Header-CN4 (Optional)	15
Front Panel Header-FP1	15
USB Headers-FP_U1/2/FP_USB3_1	16
Front Panel Audio Header-FP_S1	16
Speaker Header-SPK1	17
Serial-ATA (SATA) Connectors (SATA1~4)	17
Fan Connectors	17
Expansion Slots	18
Jumper Settings	18
Configuring the BIOS	19
Enter BIOS Setup	19
Main Menu	19
X-Setting Menu	20
Advanced Menu	21
OnBoard Device Config	21
Storage Configuration	22
CPU Configuration	22
USB Configuration	22
Display Configuration	23
PC Health Menu	23
CPU/SYS FAN Control Mode	23
PowerManage Menu	24
Boot Menu	25
Boot Configuration	25

Exit Menu	27
Save Changes and Exit	27
Discard Changes and Exit	27
Save Changes and Reset	27
Discard Changes and Reset	27
Save Changes	28
Discard Changes	28
Restore Defaults	28
Save as User Defaults	28
Restore User Defaults	28
Launch EFI Shell from filesystem device	28
Flash Update Procedure	28
Installing Drivers and Software	29
Drivers Installation	29
Realtek HD Audio Driver Setup	37
Getting Started	37
Digital Output	37
Speakers	39
Microphone	40
Line In	41
Device Advanced Settings	42
Connector Settings	42
Information	43
SATA RAID User Manual	44
Setting up the BIOS	44
Entering the RAID BIOS utility	45
Creating a RAID set	45
Deleting a RAID set	46
Intel® Rapid Storage Technology	47
Instruction	47
Setting Intel® Rapid Storage	47

Motherboard Specifications

Chipset

- ❖ Intel® Z77 Chipset
- ❖ Support Processor, Memory and Graphics Processor over clocking performance
- ❖ Support RST SSD Caching (with Intel Rapid Storage Technology v11.0)

Size

- ❖ Mini ITX form factor of 6.7 X 6.7 inch

Microprocessor Support

- ❖ Support LGA 1155 Socket for 2nd/3rd Generation Intel® Core processors
(max TDP: 95W)

Operating Systems

- ❖ Support Windows 7

System Memory

- ❖ Support 1 GB, 2 GB, 4 GB and 8 GB DDR3 DRAM devices
- ❖ Support Dual Channel DDR3-1066/1333/1600 MHz (overclocking frequency: 2667 MHz)
- ❖ Maximum memory size: 16 GB

USB 2.0 Ports

- ❖ Support hot plug and play
- ❖ Eight USB 2.0 ports (four ports on the back panel, four via the USB brackets connected to the internal USB headers)
- ❖ Support USB 2.0 protocol up to 480 Mbps transmission rate
- ❖ Support USB Charger

USB 3.0 Ports

- ❖ Support hot plug and play
- ❖ Four USB 3.0 ports (two on the back panel, two via the USB bracket connected to the internal USB header)
- ❖ Fully backward compatible with USB 2.0 and 1.1 specifications

Onboard Serial ATA Ports

- ❖ Independent DMA operation on four ports
- ❖ Supports two SATAIII ports (6.0 Gb/s) and two SATAII ports (3.0 Gb/s)
- ❖ Support RAID 0, 1, 0+1, 5

Onboard LAN

- ❖ Support Full Duplex flow control (IEEE802.3x)

- ❖ 10/100/1000 BASE-T IEEE 802.3 compliant
- ❖ Wake On LAN (WOL) power management support

❑ **WiFi/BT Support**

- ❖ Compliant with IEEE802.11n Draft 2.0 Standard
- ❖ High speed wireless connection and enhanced wireless security
- ❖ Max transfer rate up to 150 Mbps (optional for different models)

❑ **Audio**

- ❖ 8 channel High Definition Audio (including one optical SPDIF output port)
- ❖ All DACs support 192k/96k/48k/44.1kHz sample rate
- ❖ One SPDIF-out header on board

❑ **Onboard Graphics Features**

- ❖ Integrated Intel® HD Graphics 2000 or 3000 (depend on CPU), DX10.1 and OpenGL 3.0 are supported (2nd Gen CPU feature)
- ❖ Integrated Intel® HD Graphics 2500 or 4000 (depend on CPU), DX11 and OpenGL 3.0 are supported (3rd Gen CPU feature)
- ❖ 3D Graphics Rendering Enhancements
- ❖ Two HDMI ports and one Mini Display port output support
- ❖ Support resolution up to 1920x1200 @ 60Hz for HDMI and 2560x1600 @ 60Hz for Mini Display port

❑ **Expansion Slots**

- ❖ One PCI Express x16 slot
- ❖ One half-sized Mini PCI Express slot (vertical)
- ❖ One full-sized Mini PCI Express slot for mSATA

❑ **TPM (optional)**

- ❖ Support Trusted Platform Module (TPM) security function

Motherboard Layout

Figure 1 shows the motherboard and Figure 2 shows the back panel connectors.

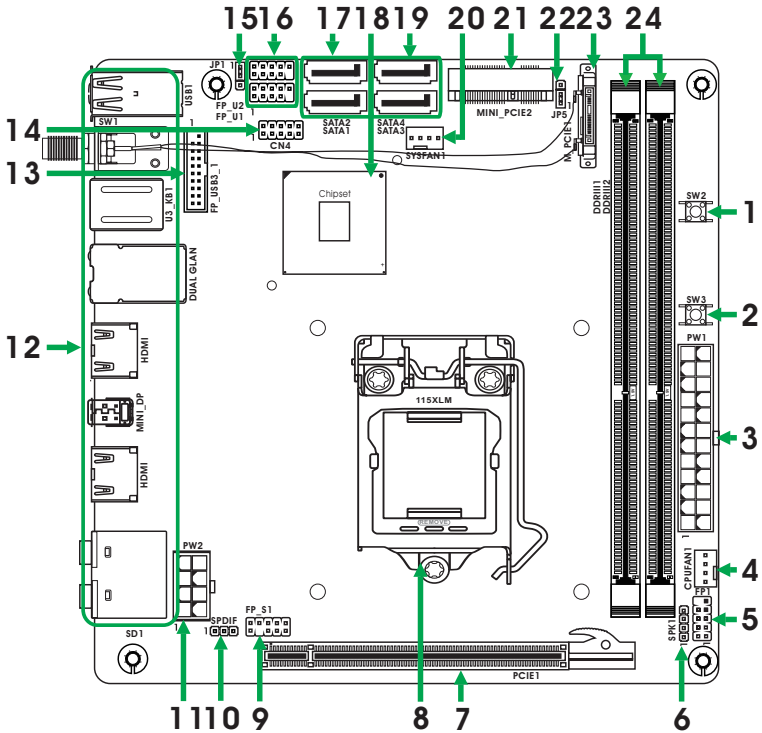
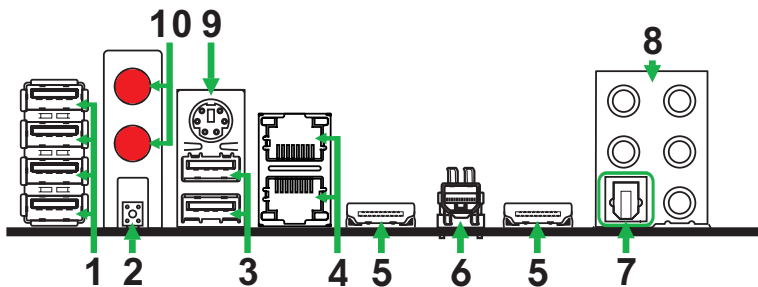


Figure 1

Figure 1. Board Layout

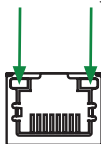
- | | |
|---|---|
| <ol style="list-style-type: none"> 1. Reset Switch-SW2 2. Power Button-SW3 3. 24-pin ATX Power Connector-PW1 4. CPU Fan Connector-CPUFAN1 5. Front Panel Header-FP1 6. Speaker Header-SPK1 7. PCI Express x16 Slot-PCI-E1 8. CPU Socket 9. Front Panel Audio Header-FP_S1 10. SPDIF-Out Header-SPDIF 11. 8-pin ATX_12V power connector-PW2 12. Backpanel Connectors | <ol style="list-style-type: none"> 13. USB 3.0 Header-FP_USB3_1 14. COM Header-CN4 (Optional) 15. Clear CMOS Jumper-JP1 16. USB 2.0 Headers (FP_U1~FP_U2) 17. SATAIII Connectors (SATA1~2) 18. Chipset 19. SATAII Connectors (SATA3~4) 20. SYS Fan Connector-SYSFAN1 21. Mini PCI Express Slot (mSATA)-MINI_PCIE2 22. ME Update Jumper-JP5 (Optional) 23. Mini PCI Express Slot-M_PCIE1 24. DDR III DIMM Sockets-DDR III1~2 |
|---|---|

Figure 2. Backpanel connectors



1. USB 2.0 Ports
2. Clear CMOS Button
3. USB 3.0 Ports
4. LAN port LED indicators

Speed LED Activity LED



Speed LED

Status	Description
Off	Speed: 10 Mbps
Green	Speed: 100 Mbps
Orange	Speed: 1000 Mbps

Activity LED

Status	Description
Off	No link
Orange	Linked
Blinking	Data activity

5. HDMI Ports
6. Mini Display Port
7. Optical SPDIF Output

8. Port	2-Channel	4-Channel	6-Channel	8-Channel
Blue	Line-In	Line-In	Line-In	Side Speaker Out
Green	Line-Out	Front Speaker Out	Front Speaker Out	Front Speaker Out
Pink	Mic In	Mic In	Mic In	Mic In
Black	–	–	Center/Subwoofer	Center/Subwoofer
Orange	–	Rear Speaker Out	Rear Speaker Out	Rear Speaker Out

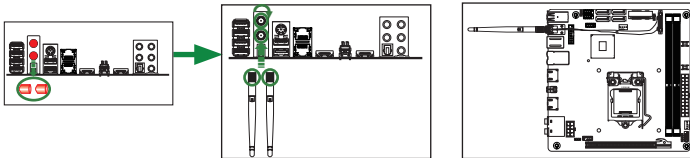
9. PS2 Keyboard/Mouse Port
(Refer to page 21 to set PS2 Keyboard/Mouse Swap)

10. WiFi/BT antenna connectors (Optional)

This motherboard can support two antennas for WiFi/BT combo. Refer to the following to install the WiFi/BT antennas.

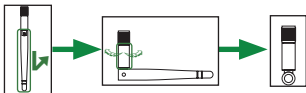
Step 1. Remove the red caps from the WiFi/BT antenna connectors.

Step 2. Install the antennas to the WiFi/BT antenna connectors, and make sure the screws are rotated in clockwise direction.



Note:

1. Users please note that the appearance of your WiFi/BT antennas may not be exactly the same as those shown in this manual.
2. Users need to install WiFi/BT antennas to the motherboard for better signal reception.
3. Users can bend or rotate the WiFi/BT antennas to the best receiving direction according to the picture below.



Hardware Installation

This section will guide you through the installation of the motherboard. The topics covered in this section are:

- Preparing the motherboard
 - ❖ Installing the CPU
 - ❖ Installing the CPU fan
 - ❖ Installing Memory DIMMs

- Installing the motherboard
 - ❖ Installing the I/O Shield
 - ❖ Securing the Motherboard into the Chassis
 - ❖ Installing an mSATA SSD module (optional)

- Connecting cables and setting switches

Safety Instructions

To reduce the risk of fire, electric shock, and injury, always follow basic safety precautions.

Remember to remove power from your computer by disconnecting the AC main source before removing or installing any equipment from/to the computer chassis.

Preparing the Motherboard

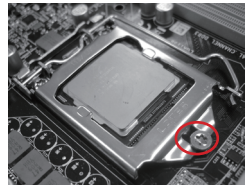
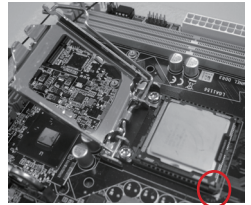
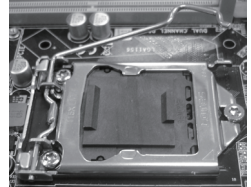
The motherboard shipped in the box does not contain a CPU and memory DIMM. You need to purchase them to complete this installation.

Installing the CPU

Be very careful when handling the CPU. Make sure not to bend or break any pins on the back. Hold the processor only by the edges and do not touch the bottom of the processor.

The following illustration shows CPU installation components

1. Unhook the socket lever by pushing down and away from the socket.
2. Lift the socket lever and the load plate to fully open position.
3. Use your thumb and forefinger to lift the cap up vertically.
 - Be careful not to touch the socket contacts.
4. Hold the processor with your thumb and forefinger. Insert the processor into the socket vertically.
 - Align the CPU pin 1 mark with the pin 1 corner of the CPU socket.
5. Make sure the CPU is fully seated, and then replace the load plate.
 - Be sure that the front end of the load plate is under the shoulder screw.
6. Secure the load lever to its locked location.

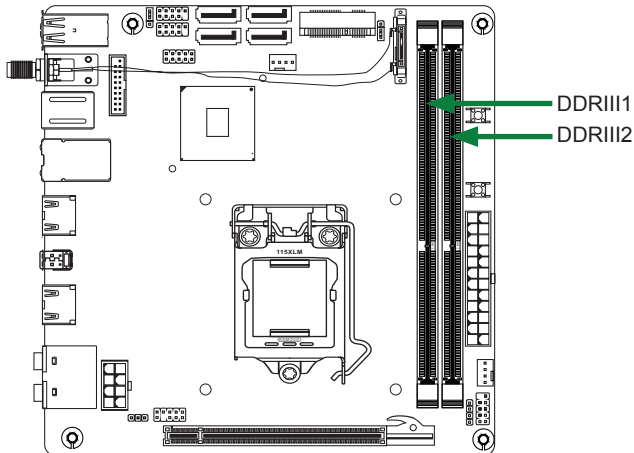


Installing the CPU Fan

There are many different fan types that can be used with this motherboard. Follow the instruction that came with your fan assembly. Be sure that the fan orientation is correct for your chassis type and your fan assembly.

Installing Memory Modules

Your new motherboard has two 1.5V 240-pin slots for DDR3 memory. These slots support 1 GB/2 GB/4 GB/8 GB DDR3 devices. There must be at least one memory bank populated to ensure normal operation. Refer to the following recommendations to install memory modules.



Note that a memory module has a notch, so it can only fit in one direction. Refer to the following procedure to install memory modules into the slots on the motherboard.

1. Unlock a DIMM slot by pressing the module clips outward.
2. Align the memory module to the DIMM slot, and insert the module vertically into the DIMM slot. The plastic clips at both sides of the DIMM slot automatically lock the DIMM into the connector.

Installing the Motherboard

The sequence of installing the motherboard into the chassis depends on the chassis you are using and if you are replacing an existing motherboard or working with an empty chassis. Determine if it would be easier to make all the connections prior to this step or to secure the motherboard and then make all the connections. It is normally easier to secure the motherboard first. Use the following procedure to install the I/O shield and secure the motherboard into the chassis.

Note: *Be sure that the CPU fan assembly has enough clearance for the chassis covers to lock into place and for the expansion cards. Also make sure the CPU Fan assembly is aligned with the vents on the covers.*

Installing the I/O Shield

The motherboard kit comes with an I/O shield that is used to block radio frequency transmissions, protects internal components from dust and foreign objects, and promotes correct airflow within the chassis.

Before installing the motherboard, install the I/O shield from the **inside** of the chassis. Press the I/O shield into place and make sure it fits securely. If the I/O shield does not fit into the chassis, you would need to obtain the proper size from the chassis supplier.

Securing the Motherboard into the Chassis

Most computer chassis have a base with mounting studs or spacers to allow the motherboard to be secured to the chassis and help to prevent short circuits. If there are studs that do not align with a mounting hole on the motherboard, it is recommended that you remove that stud to prevent the possibility of a short circuit. In most cases, it is recommended to secure the motherboard with spacers.

1. Carefully place the motherboard onto the studs/spacers located inside the chassis.
2. Align the mounting holes with the studs/spacers.
3. Align the connectors to the I/O shield.
4. Ensure that the fan assembly is aligned with the chassis vents according to the fan assembly instruction.
5. Secure the motherboard with screws.

Connecting Cables and Setting Switches

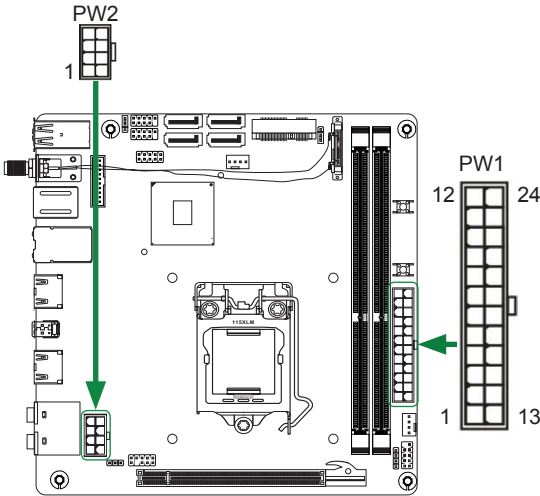
This section takes you through all the connectors and switch settings necessary on the motherboard. This will include:

- Power Connectors
 - ❖ 24-pin ATX Power Connector-PW1
 - ❖ 8-pin ATX_12V Power Connector-PW2
- Internal Headers/Connectors
 - ❖ SPDIF-Out Header-SPDIF
 - ❖ COM Header-CN4 (Optional)
 - ❖ Front Panel Header-FP1
 - ❖ USB Headers (FP_U1/2/FP_USB3-1)
 - ❖ Front Panel Audio Header-FP_S1
 - ❖ Speaker Header-SPK1
- Serial-ATA (SATA) Connectors (SATA1~4)
- Fan Connectors
- Expansion Slots
- Jumper Settings

See Figure 1 to locate the connectors and jumpers referenced in the following procedure.

24-pin ATX Power Connector-PW1

PW1 is the main power supply connector. Make sure that the power supply cable and pins are properly aligned with the connector on the motherboard. Firmly plug the power supply cable into the connector and make sure it is secure.



PW1-Pin Definition

Pin	Signal	Pin	Signal
1	+3.3V	13	+3.3V
2	+3.3V	14	-12V
3	GND	15	GND
4	+5V	16	PS_ON
5	GND	17	GND
6	+5V	18	GND
7	GND	19	GND
8	PWROK	20	-5V
9	+5V_AUX	21	+5V
10	+12V	22	+5V
11	+12V	23	+5V
12	+3.3V	24	GND

8-pin ATX_12V Power Connector-PW2

PW2, the 8-pin ATX 12V power connection, is used to provide power to the CPU. Align the pins to the connector and press firmly until seated.

PW2-Pin Definition

Pin	Signal	Pin	Signal
1	GND	5	+12V
2	GND	6	+12V
3	GND	7	+12V
4	GND	8	+12V

SPDIF-Out Header-SPDIF

This header provides a SPDIF (Sony/Philips Digital Interface) output to digital multimedia device through coaxial connector.

COM Header-CN4 (Optional)

CN4 - Pin Definition

Pin	Signal	Pin	Signal
1	DCD	2	RXD
3	TXD	4	DTR
5	GND	6	DSR
7	RTS	8	CTS
9	RI	10	NC

SPDIF - Pin Definition

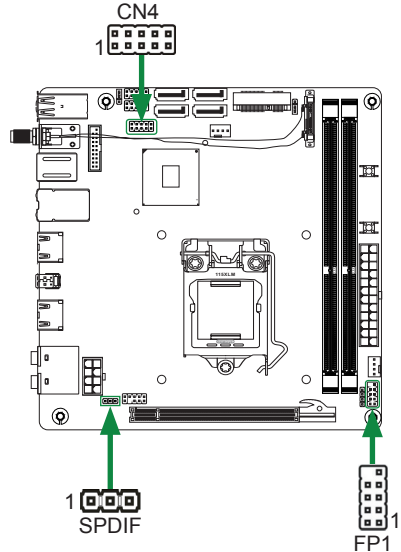
Pin	Signal
1	GND
2	SPDIF-out
3	VCC

Front Panel Header-FP1

The front panel header on this motherboard is one connector used to connect the following four cables :

FP1-Pin Definition

Pin	Signal	Pin	Signal
1	HDD_LED+	2	PW_LED+
3	HDD_LED-	4	PW_LED-
5	GND	6	PWR_SW
7	RESET	8	GND
9	NC	10	KEY



PWRLD

Attach the front panel power LED cable to these two pins of the connector. The Power LED indicates the system's status.

PWR SW

Attach the power button cable from the case to these two pins. Pressing the power button on the front panel turns the system on and off rather than using the power supply button.

HDD LED

Attach the hard disk drive indicator **LED** cable to these two pins. The HDD indicator **LED** indicates the activity status of the hard disks.

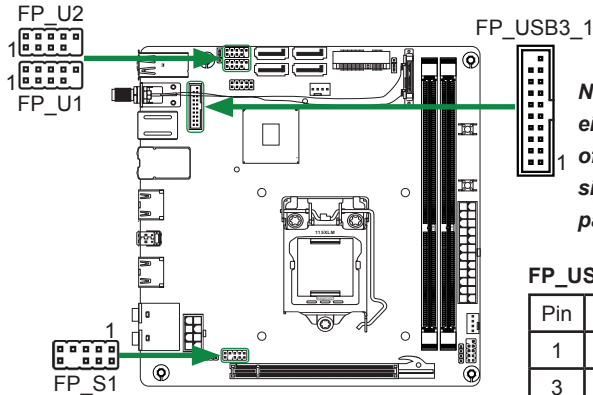
RST SW

Attach the Reset switch cable from the front panel of the case to these two pins. The system restarts when the **RESET** switch is pressed.

Note: Some chassis do not have all four cables. Be sure to match the name on the connectors to the corresponding pins.

USB Headers-FP_U1/2/FP_USB3_1

This motherboard contains four USB 2.0 and two USB 3.0 ports that are exposed on the rear panel of the chassis. The motherboard also contains two 10-pin internal USB 2.0 headers and one 20-pin USB 3.0 connector onboard.



Note: Secure the bracket to either the front or rear panel of your chassis (not all chassis are equipped with the front panel option).

FP_USB3_1-Pin Definition

Pin	Signal	Pin	Signal
1	NC	2	BD+
3	AD+	4	BD-
5	AD-	6	GND2
7	GND1	8	BSSTX+
9	ASSTX+	10	BSSTX-
11	ASSTX-	12	GND3
13	GND	14	BSSRX+
15	ASSRX+	16	BSSRX-
17	ASSRX-	18	BVBUS
19	AVBUS	20	KEY

FP_U1~FP_U2-Pin Definition

PIN	Assignment	PIN	Assignment
1	VCC	2	VCC
3	USBP0-	4	USBP1-
5	USBP0+	6	USBP1+
7	GND	8	GND
9	KEY	10	NC

Front Panel Audio Header-FP_S1

The audio connector supports HD audio standard and provides two kinds of audio output choices: the Front Audio, the Rear Audio. The front Audio supports retasking function.

FP_S1-Pin Definition

PIN	Assignment	PIN	Assignment
1	MIC2(L)	2	GND
3	MIC(R)	4	-ACZ-DET
5	Front Audio(R)	6	Reserved
7	FAVDIO-JD	8	Key(No pin)
9	Front Audio(L)	10	Reserved

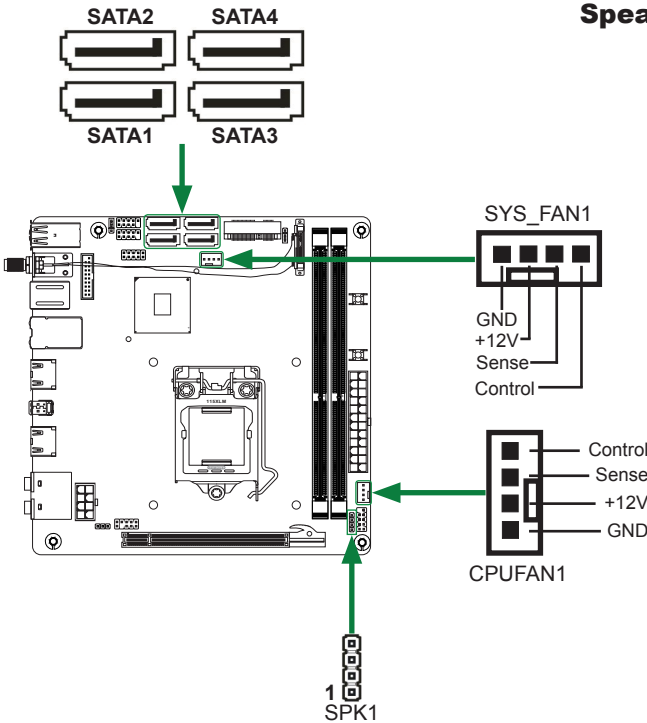
Note:

In order to utilize the front audio header, your chassis must have front audio connector. Also please make sure the pin assignment on the cable is the same as the pin assignment on the mainboard header. To find out if the chassis you are buying supports a front audio connector, please contact your dealer.

Speaker Header-SPK1

SPK1-Pin Definition

PIN	Assignment
1	VCC
2	NC
3	NC
4	SPK-



Serial-ATA (SATA) Connectors (SATA1~4)

The Serial ATA connector is used to connect the Serial ATA device to the motherboard. These connectors support the thin Serial ATA cables for primary storage devices. The motherboard incorporates two SATA II ports (SATA3/4) with maximum transfer rate up to 3.0 Gb/s each and two SATA III ports (SATA1/2) with maximum transfer rate up to 6.0 Gb/s each.

Fan Connectors

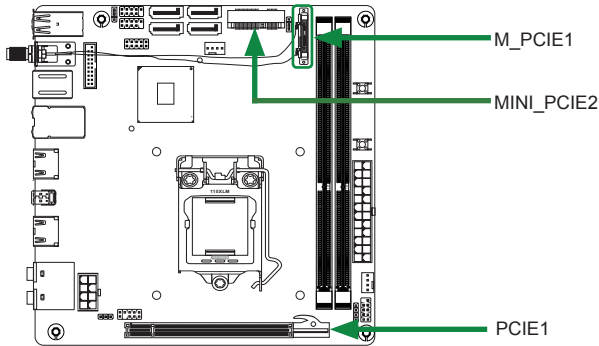
There are two fan connectors on the motherboard, including system fan connector-SYSFAN1 and CPU fan connector-CPU-FAN1.

SATA-Pin Definition

Pin	Signal
1	GND
2	TXP
3	TXN
4	GND
5	RXN
6	RXP
7	GND

Expansion Slots

The motherboard contains three expansion slots, two Mini PCIe slots and one PCIe x16 slot.



Mini PCI Express Slots-M_PCIE1/MINI_PCIE2

There are two Mini PCI Express slots. M_PCIE1 supports one half-sized WiFi card. MINI_PCIE2 supports one mSATA SSD.

PCIe x16 Slot-PCI1

There is one PCIe x16 slot reserved for graphics card. It is fully compliant with PCIe 3.0 specification.

Jumper Settings

This section explains how to configure the motherboard's hardware. Before using your computer, make sure all jumpers and DRAM modules are set correctly. Refer to this section whenever in doubt.

CMOS Clear Jumper-JP1

JP1	Selection
1 1-2*	Normal*
1 2-3	CMOS Clear

Close Open * = Default setting.

If you want to clear the system configuration, use the JP1 (Clear CMOS Jumper) to clear data.

ME Update Jumper-JP5 (optional)

JP5	Selection
1 1-2*	Normal*
1 2-3	Intel® Management Engine (ME) update

Notice:

1. Be sure to save the CMOS setting when exit the CMOS.
2. If the CPU is frequency multiplier locked, no CPU speed change will be seen even if the frequency multiplier setting in CMOS setup is changed.

Configuring the BIOS

This section discusses how to change the system settings through the BIOS Setup menus. Detailed descriptions of the BIOS parameters are also provided.

Enter BIOS Setup

The BIOS is the communication bridge between hardware and software. Correctly setting the BIOS parameters is critical to maintain optimal system performance.

Refer to the following procedure to verify/change BIOS settings.

1. Power on the computer.
2. Press the **Del** key when the following message briefly displays at the bottom of the screen during the Power On Self Test (POST).

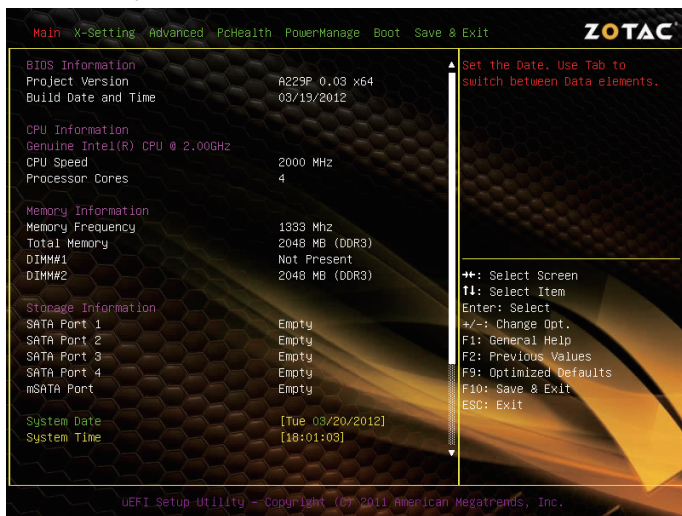
Pressing **Del** takes you to the BIOS Setup Utility.

Note: 1. We reserve the right to update the BIOS version presented in the manual. The BIOS pictures shown in this section are for reference only.

2. It is strongly recommended that you do not change the default BIOS settings. Changing some settings could damage your system.

Main Menu

This menu gives you an overview of the general system specifications. The BIOS automatically detects the items in this menu.



Note: Users please note that the data in gray is non-changeable, and the others are for selection.

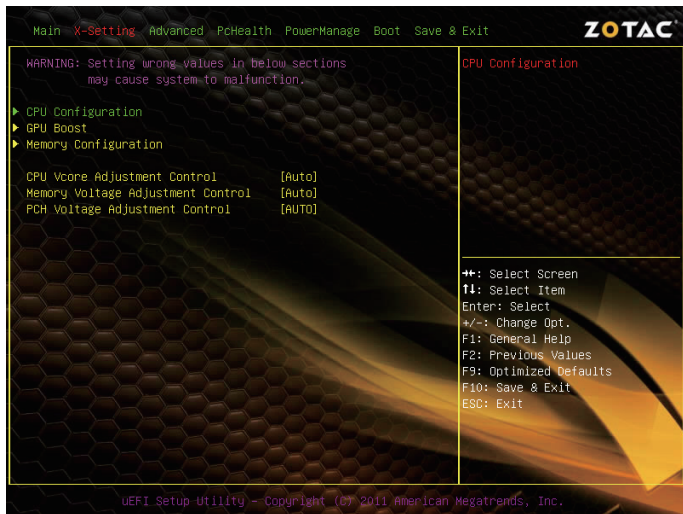
BIOS Information

Displays the auto-detected BIOS information.

- Memory Information**
Displays the auto-detected memory information.
- System Language**
Choose the system default language.
- System Date/Time**
Allows you to set the system date/time.

X-Setting Menu

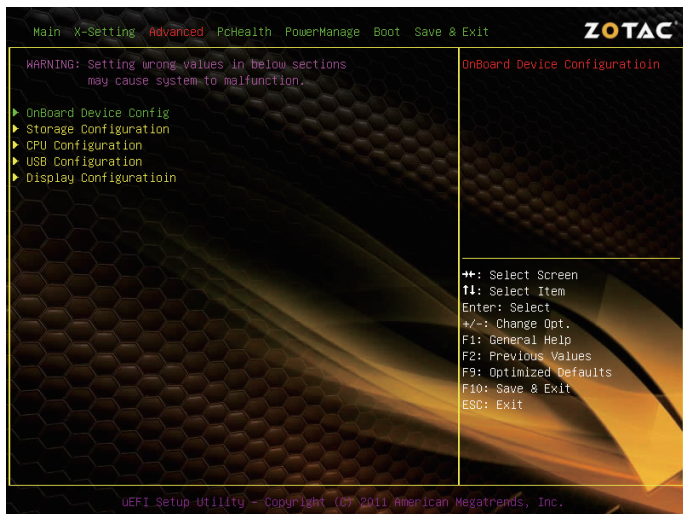
The X-Setting menu items show the settings of CPU, memory and so on. Press <enter> to display the configuration options:



- CPU Configuration**
The items in this submenu show the CPU-related information that the BIOS automatically detects.
- GPU Boost**
Use this item to adjust graphics configuration.
- Memory Configuration**
Use this item to adjust memory configuration.
- CPU Vcore Adjustment Control**
Use this item to control CPU Vcore.
- Memory Voltage Adjustment Control**
Use this item to adjust memory voltage.
- PCH Voltage Adjustment Control**
Use this item to adjust PCH voltage.

Advanced Menu

The Advanced menu items allow you to change the setting for the CPU and other system devices. Press <enter> to display the configuration options:



OnBoard Device Config

The OnBoard Device Config menu items show the settings of LAN, USB3.0 and so on.

- Serial Port 0 Configuration**
Allows you to set parameters of Serial Port 0 (COMA).
- PS2 Keyboard/Mouse Swap**
Allows you to set the PS2 Keyboard or Mouse swap.
- Intel(R) Smart Connect Technology**
Use this item to enable or disable Intel Smart Connect Technology.
- PCI-E GigaLAN1/2 Controller**
Use this item to enable or disable PCI-E GigaLAN1/2 controller.
- USB3.0 Ports Controller**
Use this item to enable or disable USB3.0 ports.
- Launch PXE OpROM**
Use this item to enable or disable Launch PXE OpROM.
- Launch Storage OpROM**
Use this item to enable or disable Launch Storage OpROM.
- Azalia**
Use this item to set Azalia.
- Azalia Internal HDMI Codec**
Use this item to enable or disable Azalia internal HDMI codec.
- Azalia HDMI codec Port B/C/D**
Use this item to enable or disable Azalia HDMI codec port.

Storage Configuration

The items in this menu allow you to set or change the storage configurations. Press <enter> to display the configuration options:

SATA Controller(s)

Allows you to configure SATA controller.

SATA Mode Selection

Allows you to choose SATA mode, including IDE Mode, AHCI Mode and RAID Mode.

CPU Configuration

The items in this menu show the CPU-related information that the BIOS automatically detects. Press <enter> to display the configuration options:

Active Processor Cores

This item allows you to choose the number of the active processor cores. The default value is [All].

Limit CPUID Maximum

Allows you to determine whether to limit CPUID maximum value.

Execute Disable Bit

When disabled forces the XD feature flag to always return 0, defaults choose [Enable].

Intel Virtualization Technology

Hardware Virtualization Technology enables processor feature for running multiple simultaneous virtual machines allowing specialized software applications to run in full isolation of each other.

Hardware Prefetcher

Use this item to enable or disable hardware prefetcher (hardware prefetch mechanism).

Adjacent Cache Line Prefetch

Use this item to enable or disable the adjacent cache line prefetch mode. If you disable this item, only one 64-bit line will be prefetched from the 128-bit section (including the required data). If you enable this item, two lines will be prefetched whether there is required data or not.

USB Configuration

The items in this menu allow you to change the USB-related features. Press <enter> To display the configuration options:

Legacy USB Support

Allows you to enable or disable support for USB devices on legacy operating systems.

USB3.0 Support

Allows you to enable or disable support for USB3.0 devices.

XHCI/EHCI Hand-Off

Allows you to enable support for operating systems without an XHCI/EHCI hand-off feature.

Display Configuration

The items in this menu allow you to set display Configuration.

- Primary Display**
Select the primary display, options: IGFX/PEG/PCI.
- Internal Graphics**
This item allows you to configure the internal graphics.
- Aperture Size**
This item allows you to set the aperture size, options: 64MB/128MB/256MB.
- DVMT Pre-Allocated**
This item allows you to set DVMT pre-allocated size.
- DVMT Total Gfx Mem**
This item allows you to set DVMT total Gfx mem size.
- Enable PEG**
This item allows you to set PEG.

PC Health Menu

Select PC Health from the BIOS Setup Utility menu to display the System menu.

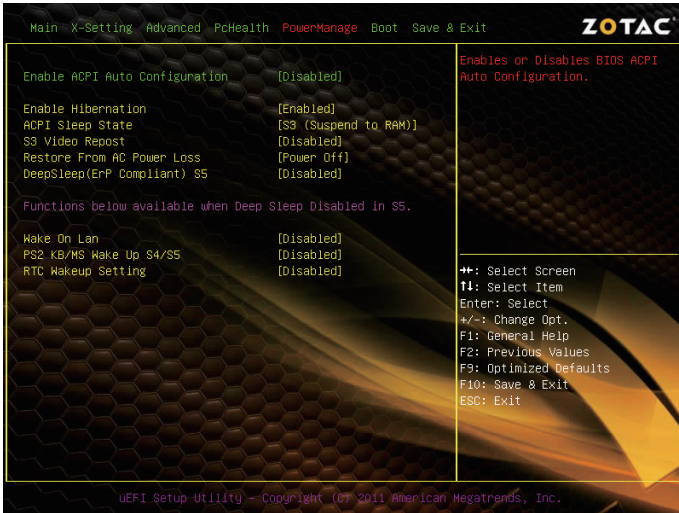


CPU/SYS FAN Control Mode

This item allows you to set the CPU/system FAN mode.

PowerManage Menu

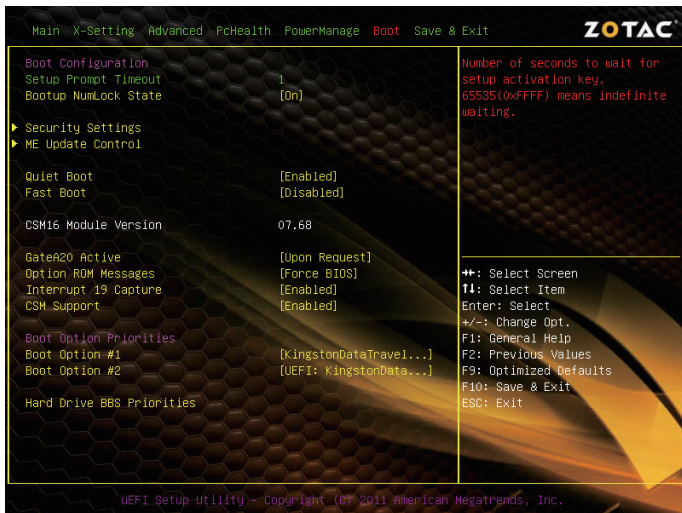
The items in this menu allow you to control the system power management. Press <Enter> to display the configuration options:



- Enable ACPI Auto Configuration**
Enable or disable ACPI auto configuration.
- Enable Hibernation**
Enable or disable hibernation function.
- ACPI Sleep State**
Select the highest ACPI sleep state, the system will enter when the SUSPEND button is pressed.
- S3 Video Repost**
This item allows you to enable or disable Repost Video on S3 Resume function. The default setting is [Disabled].
- Restore From AC Power Loss**
This item allows you to configure how the system board responds to a power failure.
- DeepSleep(ErP Compliant) S5**
When enabled, wake up from S5 can only be done by power button.
- Wake On Lan**
Enable or disable wake on LAN.
- PS2 KB/MS Wake Up S4/S5**
Enable or disable PS2 Keyboard/Mouse wakeup S4/S5.
- RTC Wakeup Setting**
Enable or disable Real-Time Clock wakeup setting.

Boot Menu

The Boot menu items allow you to change the system boot options. Press <enter> to display the configuration options:



Boot Configuration

The items allow you to configure Boot settings. Press <enter> To display the configuration options:

Setup Prompt Timeout

This item shows the number of seconds to wait for setup activation key.

Bootup NumLock State

Use this item to select the keyboard NumLock state: [On] or [Off].

Security

The security menu items allow you to change the system security settings. Press <enter> to display the configuration options:

✳ Change Supervisor/User Password

Select this item to set or change the supervisor/user password. The Supervisor/User Password item on top of the screen shows the default setting: [Not Installed]. After you set a password, this item shows [Installed].

To set a Supervisor/User Password:

1. Select the item [Change Supervisor/User Password] and press <Enter>.
2. From the password box, type a password composed of at least six letters and/or numbers, then press <Enter>.
3. Confirm the password when prompted:

The message "Password Installed" appears after you successfully set your password.

To change the supervisor/user password, follow the same steps as setting a user password.

ME Update Control

Use this item to set ME update control.

Quiet Boot

When set to [Disabled], displays normal POST message. When set to [Enabled], displays OEM Logo instead of POST messages.

Fast Boot

Enable or disable boot with initialization of a minimal set of devices required to launch active boot option.

GateA20 Active

When set to [Upon Request], GA20 can be disabled using BIOS services. When set to [Always], GA20 can not be disabled; this option is useful when any RT code is executed above 1MB.

Option ROM Messages

Use this item to set display mode for Option.

Interrupt 19 Capture

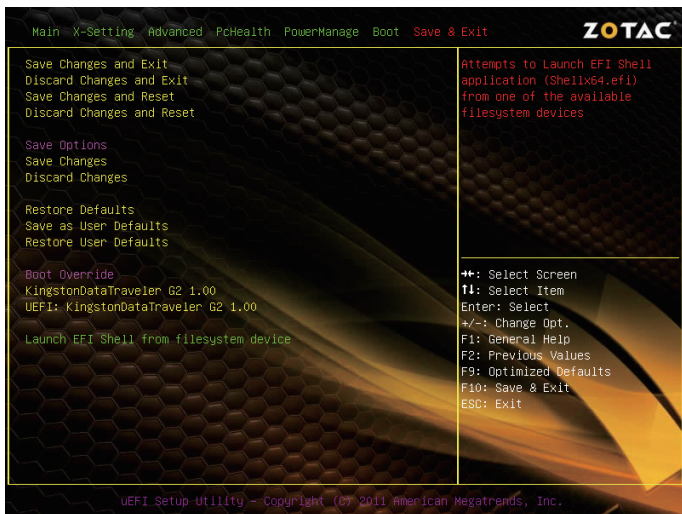
When set to [Enabled], this function allows the option ROMs to trap interrupt 19.

CSM Support

Enable or disable CSM support.

Exit Menu

The exit menu items allow you to load the option or failsafe default values for the BIOS items, and save or discard your changes to the BIOS items. Press <enter> to display the sub-menu:



Save Changes and Exit

Select this item and press <Enter> to save the changes that you have made in the BIOS Setup and exit the BIOS Setup. When the dialog box [Save configuration and exit?] appears, select [Yes] to save and exit, or select [No] to return to the main menu.

Discard Changes and Exit

Select this option only if you do not want to save the changes that you have made to the setup program. If you made changes to fields other than system date, system time, and password, the BIOS asks for a confirmation before exiting.

Save Changes and Reset

Select this item and press <Enter> to reset the system after saving the changes. When the dialog box [Save configuration and reset?] appears, select [Yes] to save and reset, or select [No] to return to the main menu.

Discard Changes and Reset

Select this item and press <Enter> to reset system setup without saving any changes. When the dialog box [Reset without saving?] appears, select [Yes] to discard and reset, or select [No] to return to the main menu.

Save Changes

Select this item and press <Enter> to save the changes that you have made in the BIOS Setup and exit the BIOS Setup. When the dialog box [Save configuration?] appears, select [Yes] to save changes, or select [No] to return to the main menu.

Discard Changes

This option allows you to discard the selections you have made and restore the previously saved values. When the dialog box [Load Previous Values?] appears, select [Yes] to discard any change and load the previously saved values.

Restore Defaults

Use this item to restore/load default values for all the setup options.

Save as User Defaults

Use this item to save the changes as User Defaults.

Restore User Defaults

Use this item to restore the User Defaults to all the setup options.

Launch EFI Shell from filesystem device

Use this item to launch EFI Shell application (Shellx64.efi) from one of the available filesystem devices.

FLASH Update Procedure

The program EFUDOS.exe is included in the driver disk (X:\Utility\EFUDOS.exe). Please follow the recommended procedure to update the flash BIOS, as listed below.

(X: your driver disk letter).

1. Create a DOS-bootable floppy diskette. Copy the new BIOS file (just obtained or downloaded) and the utility program EFUDOS.exe to the diskette.
2. Allow the PC system to boot from the DOS diskette.
3. At the DOS prompt, type

EFUDOS XX.ROM /P /B /R /N /X <ENTER>

Note: XX (the BIOS file name) can be defined by users.

4. Wait until the flash-update is complete.
5. Restart the PC.

<p>Warning: - Do not turn off or RESET the computer during the flash process. - If you are not sure how to upgrade the BIOS, please take your computer to an Authorized Service Center and have a trained technician do the work for you.</p>
--

Installing Drivers and Software

Note: It is important to remember that before installing the driver disk that is shipped in the kit, you need to load your operating system. The motherboard supports Windows 7 32bit/64bit.

The kit comes with a driver disk that contains utility drivers and additional software.

The driver disk that has been shipped with your motherboard contains the following software and drivers:

- Intel Chipset Driver
- HDA Sound Driver
- Intel Graphics Driver
- Ethernet PCI-E Driver
- USB 3.0 Controller Driver
- Azurewave WIFI Driver
- Intel Management Engine
- Usb Charger
- Bluetooth Driver

Note: We reserve the right to update the driver version presented in the manual. The driver installation pictures shown in this section are for reference only.

Drivers Installation

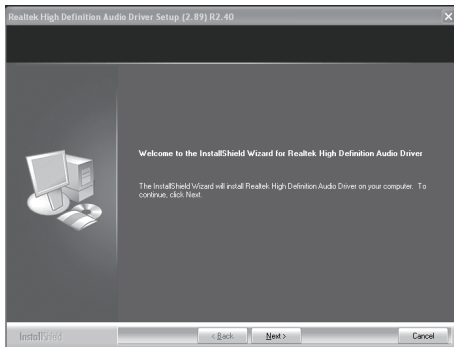
1. Insert the driver disk into the drive after loading your operating system, and then you can see the interface below.

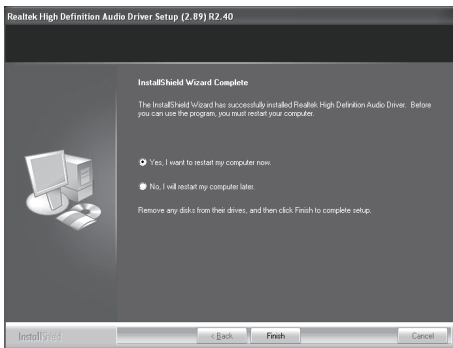


2. Left-click **Intel Chipset Driver**, begin loading

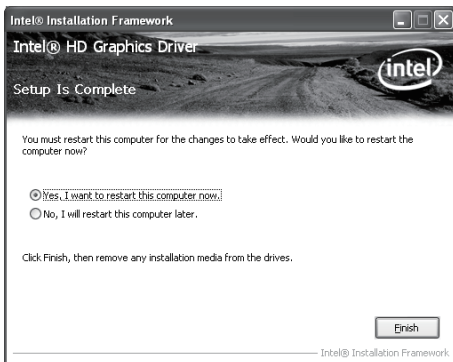
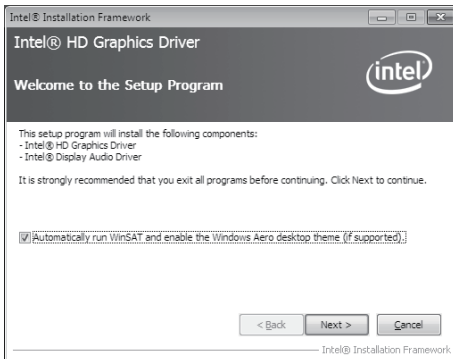


3. Left-click **HDA Sound Driver**, begin loading

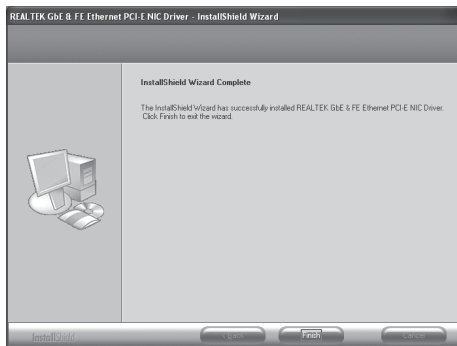
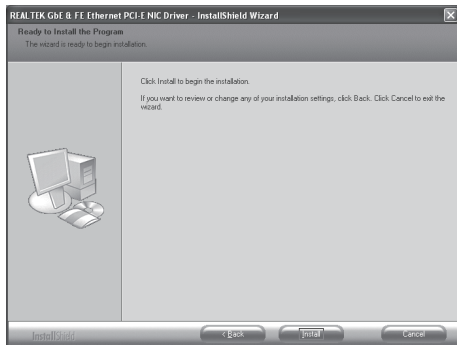
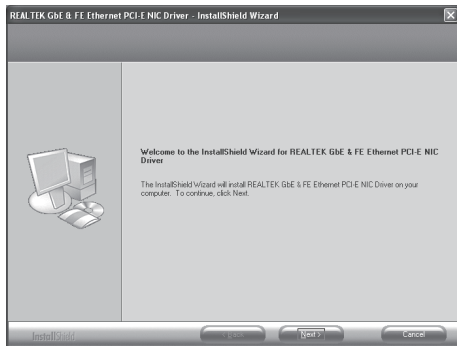




4. Left-click **Intel Graphics Driver**, begin loading



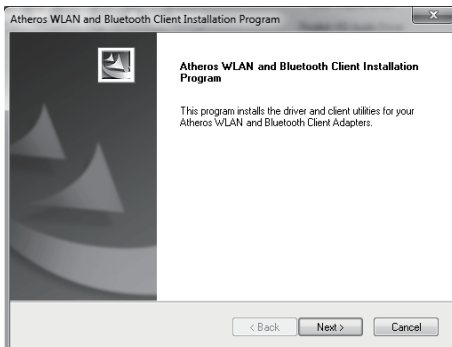
5. Left-click **Ethernet PCI-E Driver**, begin loading

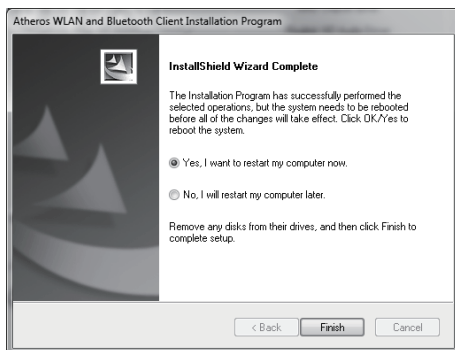


6. Left-click **USB 3.0 Controller Driver**, begin loading

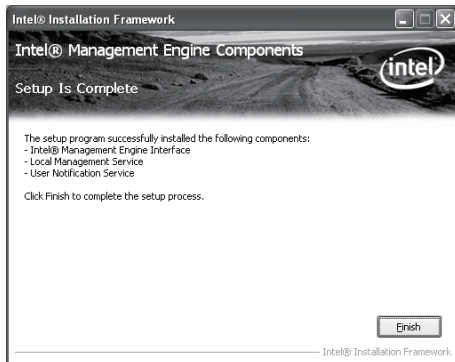
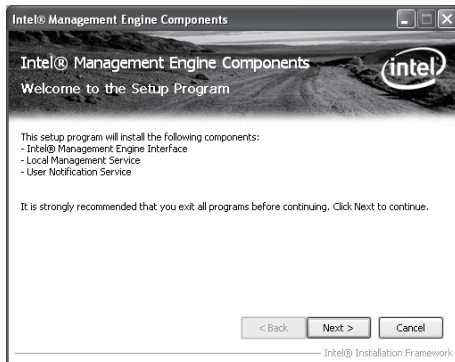


7. Left-click **Azurewave WIFI driver**, and follow the instructions below to install the wireless driver.

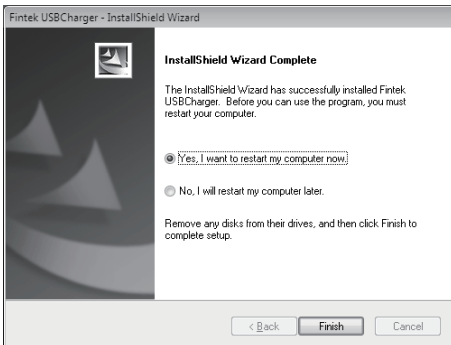
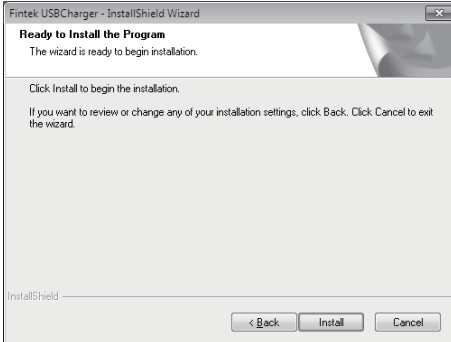
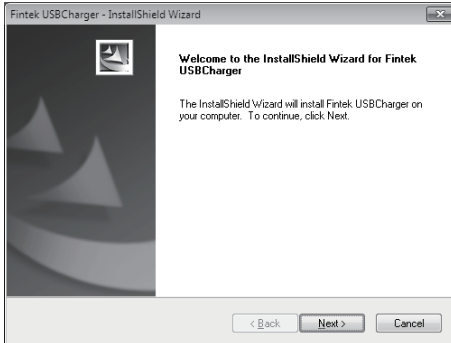


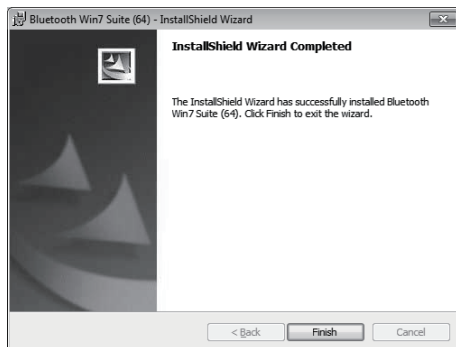
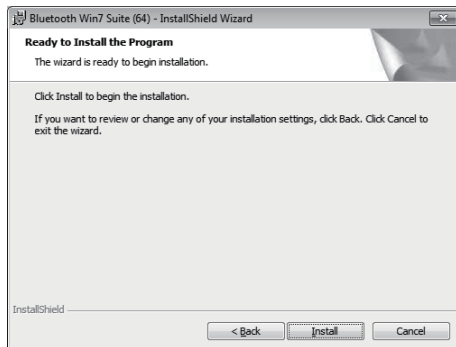
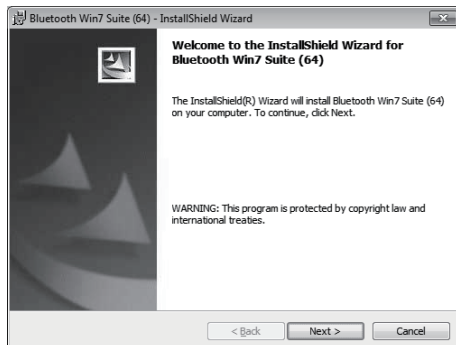


8. Left-click **Intel Management Engine**, begin loading




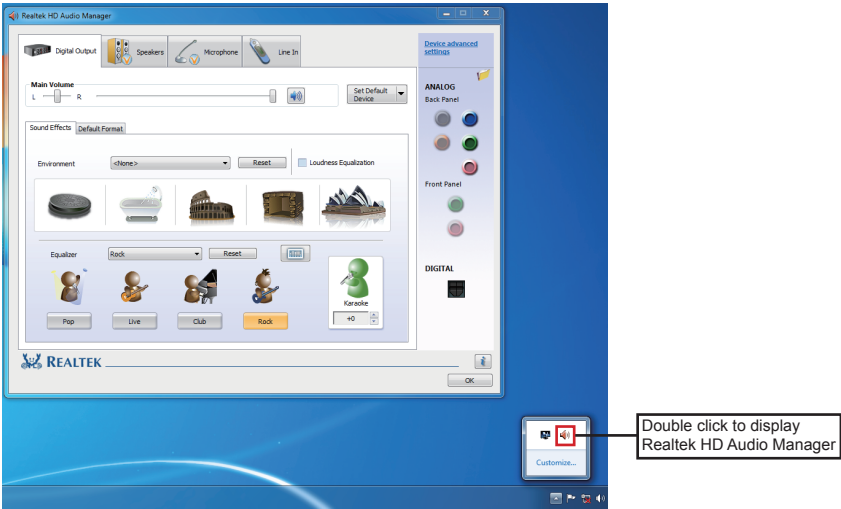
9. Left-click **Usb Charger**, begin loading



10. Left-click **Bluetooth driver**, begin loading

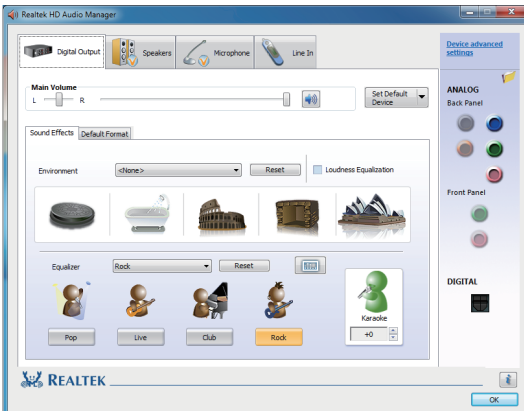
Realtek HD Audio Driver Setup Getting Started

After Realtek HD Audio Driver being installed (insert the driver disk and follow the on-screen instructions), “Realtek HD Audio Manager” icon  will show in System tray as below. Double click the icon and the control panel will appear:



Digital Output


After clicking on the “Sound Effect” tab, 3 sections “Environment”, “Equalizer” and “Karaoke” are available for selection.



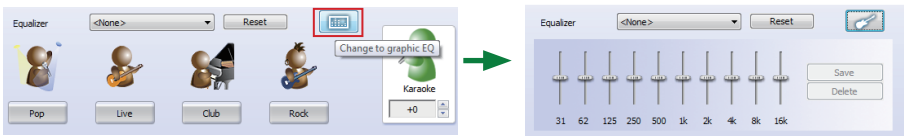
Environment Simulation

You will be able to enjoy different sound experience by pulling down the arrow, totally 23 kinds of sound effect will be shown for selection. Realtek HD Audio Sound Manager also provides five popular settings “Sewer pipe”, “Bathroom”, “Arena”, “Stone Room”, and “Auditorium” for quick enjoyment.

Equalizer Selection

Change to graphic EQ by clicking on the Equalizer icon  . The Equalizer section allows you to create your own preferred settings by utilizing this tool.

In standard 10 bands of equalizer, ranging from 31Hz to 16kHz are available:



Frequently Used Equalizer Setting

Realtek recognizes the needs that you might have. By leveraging our long experience at audio field, Realtek HD Audio Sound Manager provides you certain optimized equalizer settings that are frequently used for your quick enjoyment.

How to Use

Other than the buttons “Pop” “Live” “Club” & “Rock” shown on the page, to pull down the arrow in “Others” , you will find more optimized settings available to you.

Karaoke Mode

Karaoke mode brings Karaoke fun back home by simply using the music you usually play, Karaoke mode can help you eliminate the vocal of the song or adjust the key to accommodate your range.

Vocal Cancellation: Single click on “Voice Cancellation”, the vocals of the songs will be erased, while the background music is still playing which lets you take over the vocal part.

Key Adjustment: Using “Up/Down Arrow” to find a key which better fits your vocal range.

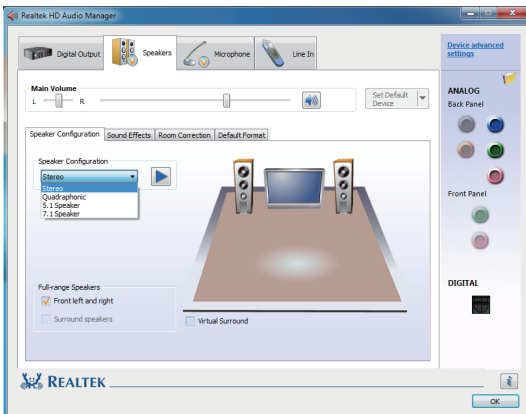
Speakers

Realtek HD Audio Manager frees you from default speaker settings. Speakers includes four tabs: Speaker Configuration, Sound Effects, Room Correction and Default Format.



Speaker Configuration

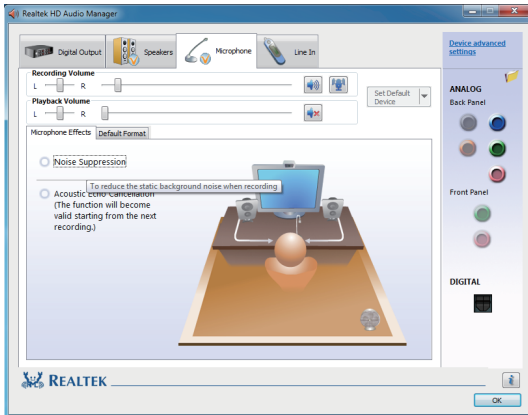
In this tab, you can choose speaker configuration: Stereo, Quadraphonic, 5.1 Speaker or 7.1 Speaker using "Up/Down Arrow".



Microphone

This page is designed to provide you better microphone/recording quality.

Below picture indicates both “Noise Suppression” & “Acoustic Echo Cancellation” are both enabled.



Noise Suppression

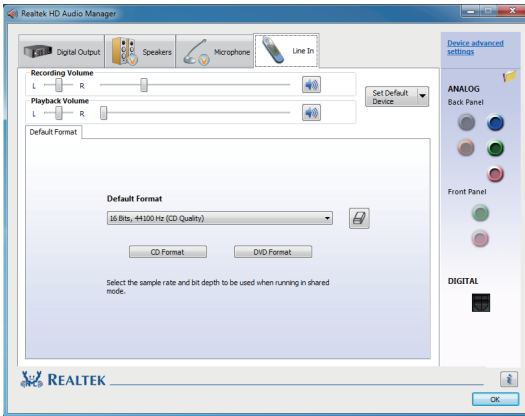
If you feel that the background noise, especially the sound generated from the fan inside PC, is too loud? Try “Noise Suppression”, which allows you to cut off and suppress disturbing noise.


Acoustic Echo Cancellation

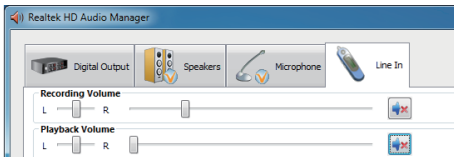
This function prevents playback sound from being recorded by microphone together with your sound. For example, you might have chance to use VOIP function through Internet with your friends. The voice of your friend will come out from speakers (playback). However, the voice of your friend might also be recorded into your microphone then go back to your friend through Internet. In that case, your friend will hear his/her own voice again. With AEC (Acoustic Echo Cancellation) enabled at your side, your friend can enjoy the benefit with less echo.

Line In

Realtek HD Audio Manager integrates “Volume Control” functions into the Line In page. This gives you the advantage to you to create your favorite sound effect in one single tool.

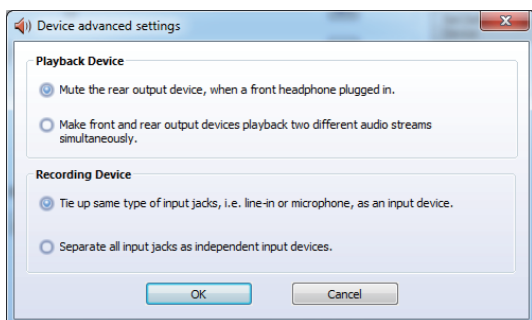
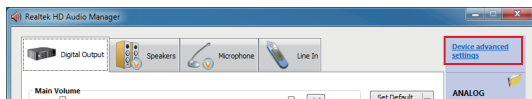


Single click on the volume icon  , the Recording/Playback Volume will be changed to the mute mode.




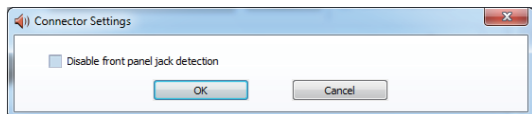
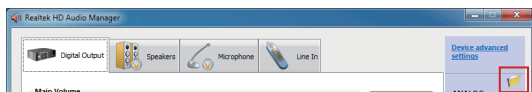
Device Advanced Settings

Click on "Device advanced settings" at the upper right corner of Realtek HD Audio Manager page, and you can set the playback device and recording device as below.




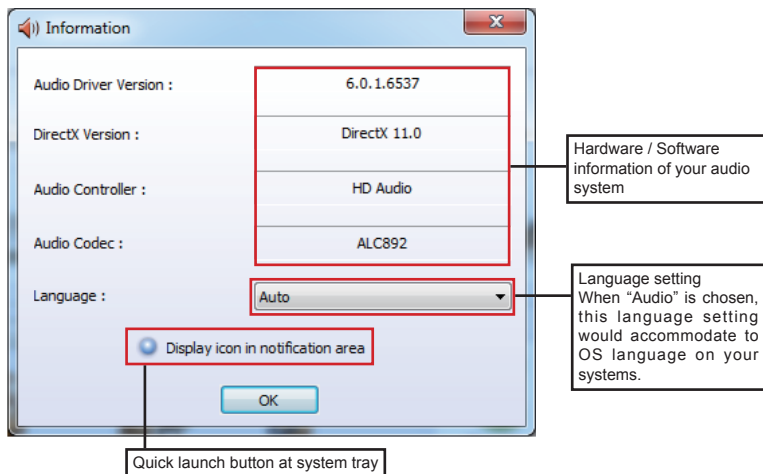
Connector Settings

Click on the icon  on the main page of Realtek HD Audio Manager, and the Connector Settings dialog will display. You can disable front panel jack detection. After changing the settings, click "OK" to confirm.



Information

Click on the icon  at the lower right corner of Realtek HD Audio Manager page, the Realtek HD Audio information will display.

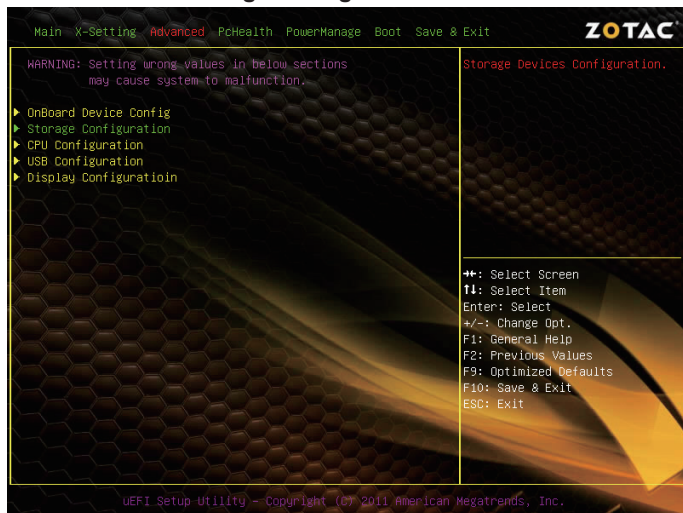


This section provides information about your current system audio device.

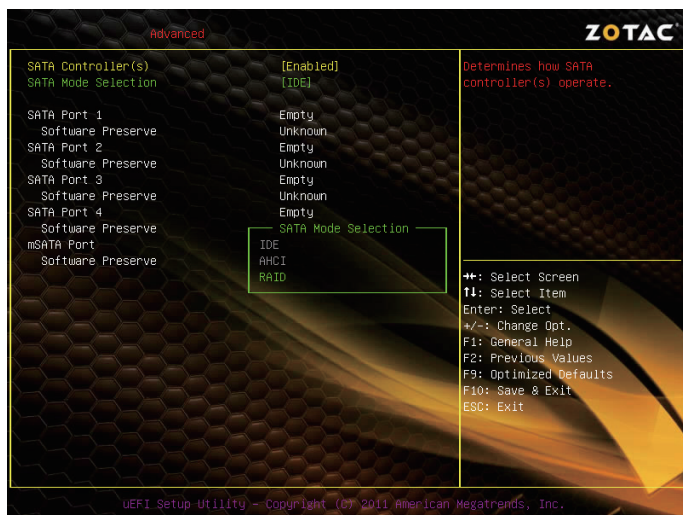
SATA RAID User Manual

Setting up the BIOS

1. Setting your computer, then press <Delete> to enter BIOS SETUP UTILITY.
2. Use the arrow key to select Advanced menu. When enter the Advanced menu, select the Item “Storage Configuration”.



3. Enter Storage Configuration > SATA Mode Selection, and enable the option “RAID”.



4. Enable the disks that you want to use as RAID disks.
5. Press F10 to save the configuration and exit. The PC reboots.

Entering the RAID BIOS utility

1. During POST, press <Ctrl> to enter the Intel(R) Rapid Storage Technology RAID BIOS menu.

```

Intel(R) Rapid Storage Technology - Option ROM - 10.0.0.1046
Copyright(C) 2003-10 Intel Corporation. All Rights Reserved.

RAID Volumes:
None defined.

Physical Devices:
Port Device Model      Serial #              Size Type/Status(Vol ID)
2   ST3250310AS        6VMS5004             232.8GB Non-RAID Disk
3   ST3250310AS        6RYLMX3X             232.8GB Non-RAID Disk

Press <CTRL-D> to enter Configuration Utility..

```

2. The main Intel(R) Rapid Storage Technology RAID BIOS menu appears.
3. Use the arrow keys to move the color bar and navigate through the items.

```

Intel(R) Rapid Storage Technology - Option ROM - 10.0.0.1046
Copyright(C) 2003-10 Intel Corporation. All Rights Reserved.
[ MAIN MENU ]
1. Create RAID Volume      3. Reset Disks to Non-RAID
2. Delete RAID Volume     4. Recovery Volume Options
                           5. Exit
[ DISK/VOLUME INFORMATION ]
RAID Volumes:
None defined.

Physical Devices:
Port Device Model      Serial #              Size Type/Status(Vol ID)
2   ST3250310AS        6VMS5004             232.8GB Non-RAID Disk
3   ST3250310AS        6RYLMX3X             232.8GB Non-RAID Disk

[+] - Select      [ESC] - Exit      [ENTER] - Select Menu

```

Creating a RAID set

1. In the main Intel(R) Rapid Storage Technology RAID BIOS menu, highlight **Create RAID Volume** using the $\uparrow \downarrow$ arrow key then press <Enter>.

```

[ MAIN MENU ]
1. Create RAID Volume      3. Reset Disks to Non-RAID
2. Delete RAID Volume     4. Recovery Volume Options
                           5. Exit

```

2. When the item **RAID Level** is highlighted, use the $\uparrow \downarrow$ arrow key to select the RAID set that you want to create.

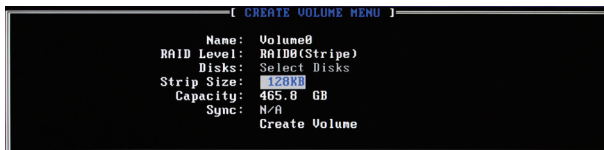
```

[ CREATE VOLUME MENU ]
Name: Volume0
RAID Level: RAID0(Striped)
Disks: Select Disks
Strip Size: 128KB
Capacity: 465.6 GB
Sync: N/A
Create Volume

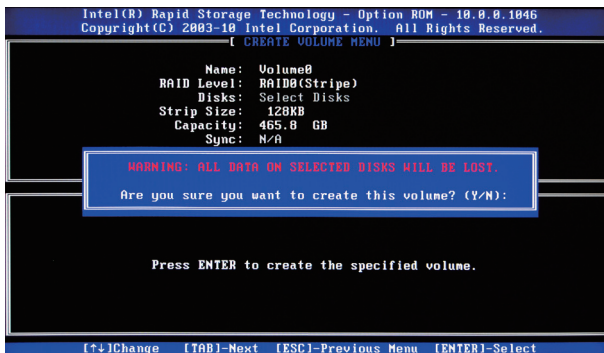
```

Note:

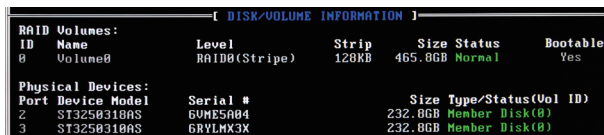
When more than two HDDs are installed in your computer, the Disks item will be selectable. Then users can select the HDD that you want to belong to the RAID set. Please be noticed that selecting a wrong disk will result in losing the original data of the HDD.



- Press <Enter> to confirm the creation of the RAID set. A dialogue box appears to confirm the action. Press <Y> to confirm; otherwise, press <N>.

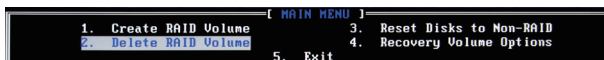


- The following screen appears, displaying the relevant information about the RAID set you created.



Deleting a RAID set

- In the main Intel(R) Rapid Storage Technology RAID BIOS menu, highlight **Delete RAID Volume** using the ↑↓ arrow key then press <Enter>.



- Use the space bar to select the RAID set you want to delete. Press the key to delete the set.

Intel® Rapid Storage Technology

Introduction

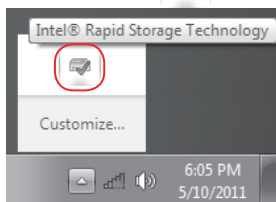
Intel® Rapid Storage Technology is a Windows-based application that provides improved performance and reliability for systems equipped with SATA disks for desktop, mobile, and server platforms. When using one or multiple SATA disks, you can take advantage of enhanced performance and lower power consumption. When using more than one disk, you can increase protection against data loss in the event of disk failure.

- Note:** 1. Please confirm that the driver: Intel Rapid Storage Technology has been installed completely before you set the following configuration.
2. There must be an SSD as cache volume to set Intel® Rapid Storage.

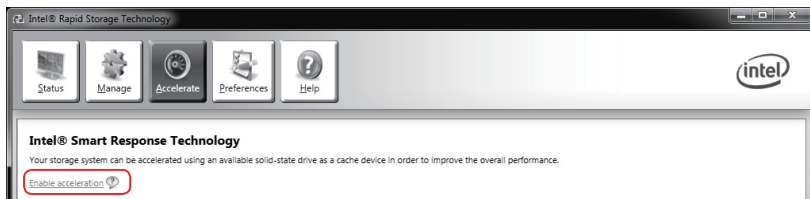
Setting Intel® Rapid Storage

Follow the instructions below to set Intel® Rapid Storage.

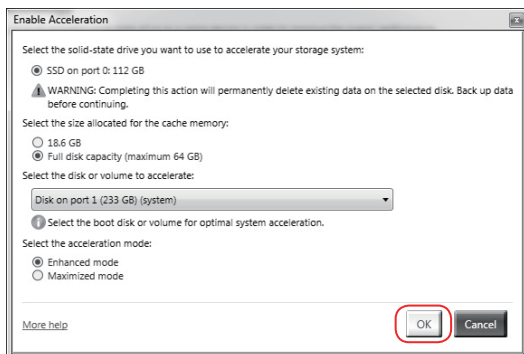
1. Click the icon  in the lower right corner of the desktop.



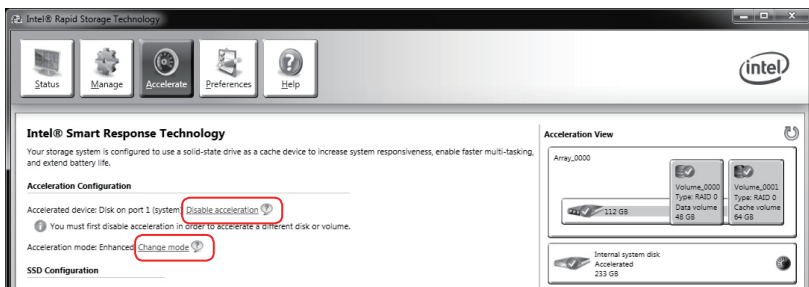
2. Enter the “Accelerate” menu, and click “Enable acceleration”.



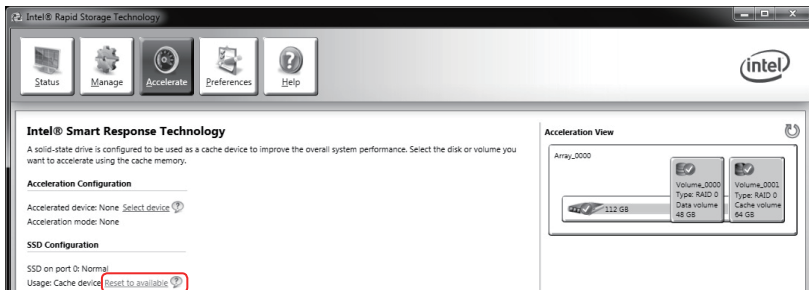
3. When the window “**Enable Acceleration**” displays, select the cache memory size and the acceleration mode, and click “**OK**” to accelerate the storage.



4. If you want to change the setting, click “**Disable acceleration**” to disable the acceleration, or click “**Change mode**” to change the acceleration mode.



5. If you want to reset cache to available, click “**Reset to available**”.



ZOTAC[®]
It's Time to Play.

WWW.ZOTAC.COM



291-MA229-00E5F